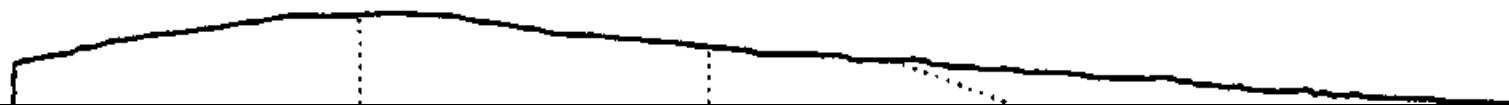


LAND SYSTEM
Stony Hills

272141

Area (ha):
41127



COMPONENT	A	B	C	D	E
PROPORTION (%)	20	20	10	30	20
RAINFALL (mm)	Approximate Annual Rainfall: 500-625				
GEOLOGY	Jurassic Dolerite				
TOPOGRAPHY		Rolling	Hills		
	Crests/Upper Slopes	Stony Mid Slopes	Stony Lower Slopes	Lower Slopes	Flats
	20	20	10	5	2
NATIVE VEGETATION					
Structure	Low Woodland	Open Woodland	Woodland	Woodland	Woodland
Floristic Association (see Appendix 1 for common names)	Eucalyptus viminalis Casuarina stricta Acacia mearnsii Acacia dealbata Stipa sp. Bulbine bulbosa Bursaria spinosa Themeda australis	Eucalyptus viminalis Casuarina stricta Bursaria spinosa Themeda australis Diplarrena moraea Bulbine bulbosa Dillwynia sp. Stipa sp. Acacia dealbata Helichrysum apiculatum Gnaphalium sp.	Eucalyptus viminalis Acacia dealbata Acacia mearnsii Bursaria spinosa Themeda australis Casuarina stricta	Eucalyptus viminalis Eucalyptus globulus Casuarina stricta Themeda australis Exocarpos cupressiformis	Eucalyptus ovata
SOIL					
Surface(A)Texture	Clay Loam	Loam/Clay Loam	Light/Medium Clay	Light Clay	Light Clay
B Horizon(subsoil) Colour (moist) Texture and primary profile form	Extremely shallow stony clay loam on bedrock very dark brown (10 YR 2/2). Uniform.	Shallow heavy clay - brown/ dark brown (10 YR 4/3). Duplex.	Shallow stony uniform clay-black (10 YR 2/1). Uniform.	Deep heavy clay - black (10 YR 2/1). Gradational.	Deep heavy clay- black (2.5 YR 2/0 to very dark greyish brown (10 YR 3/2) with yellow brown (10 YR 5/8) mottle. Gradational.
Permeability	Moderate/High	Moderate/High	Moderate	Moderate	Low/Moderate
Typical depth(m)	0.20	0.50	0.50	0.65	0.65
LAND USE	Grazing				
HAZARDS	Low Sheet Rill Erosion		Moderate Gully Erosion		Flooding, Waterlogging

272141

STONY HILLS

This land system is dispersed over a large area covered by the Derwent, Prosser and Tyenna 1:100 000 topographic maps. It consists of dry lowland dolerite hills, sometimes mountainous.

Crests and upper slopes contain an extremely shallow (0.20 m) stony clay loam developed on bedrock that supports a low woodland dominated by *Eucalyptus viminalis*, *Casuarina stricta*, *Acacia mearnsii* and *Acacia dealbata* with grassy understorey that includes *Stipa sp.*, *Themeda australis*, *Bulbine bulbosa* and *Bursaria spinosa*. *Eucalyptus pulchella* may also be present.

Stony mid-slopes commonly contain a shallow (0.50 m) duplex soil consisting of a clay loam or loam surface over a brown to dark brown heavy clay. This supports an open woodland dominated by *Eucalyptus viminalis* and *Casuarina stricta* over an understorey that includes *Bursaria spinosa*, *Themeda australis*, *Diplarrena moraea*, *Bulbine bulbosa*, *Dillwynia sp.*, *Stipa sp.*, *Acacia dealbata*, *ffelichrysum apiculatum* and *Gnaphalium sp.*

Stony lower slopes have a shallow (0.50 m) uniform light to medium black clay that supports a woodland dominated by *Eucalyptus viminalis*, and includes an understorey of *Acacia dealbata*. *Acacia mearnsii*, *Bursaria spinosa*, *Themeda australis* and *Casuarina stricta*.

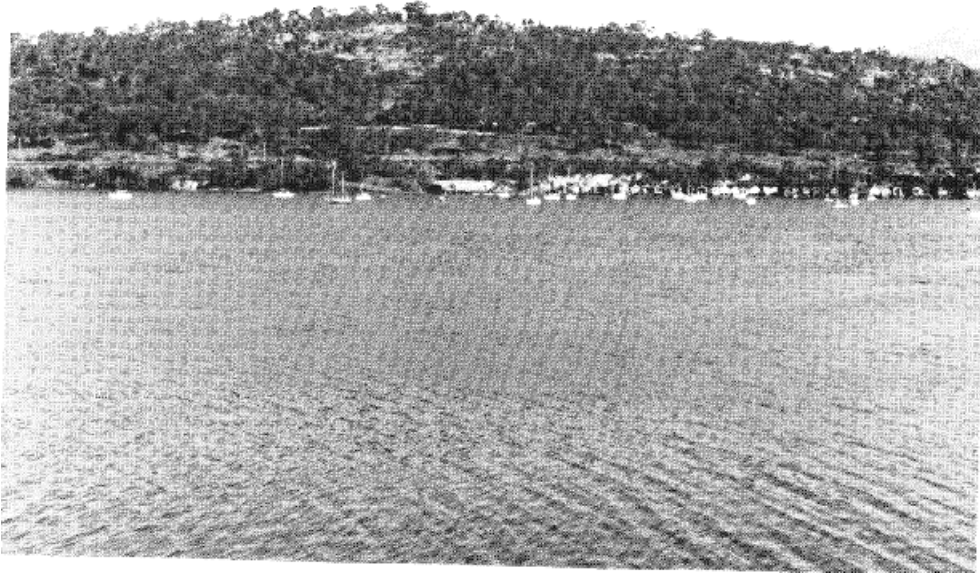
Lower slopes typically have a deep (0.65 m) gradational soil with a light clay surface overlying a black heavy clay. This supports a woodland dominated by *Eucalyptus viminalis* and *Eucalyptus globulus*, with *Casuarina stricta*, *Themeda australis* and *Exocarpos cupressiformis* common in the understorey.

Flats characteristically have a deep (0.65 m) gradational soil with a light clay surface over a black to very dark greyish brown heavy clay with a yellow brown mottle. This supports a woodland dominated by *Eucalyptus ovata*.

Grazing is the major land use.

The crests and slopes are relatively resistant to erosion, although drainage lines are susceptible to gully erosion. Flooding and waterlogging occur on drainage flats.

STONY HILLS (272141) LAND SYSTEM



The Hobart Domain - part of the Stony Hills (272141) Land System.