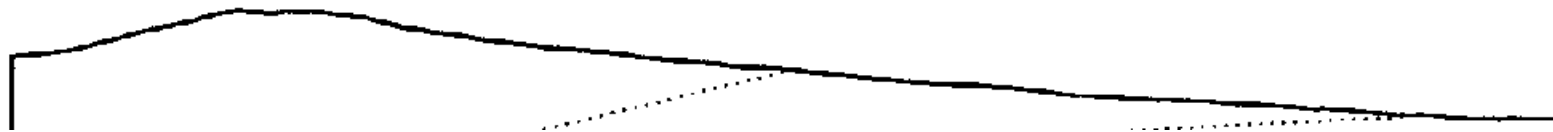


LAND SYSTEM
Isis Hills

272242

Area (ha):
127437



COMPONENT	A	B	C
PROPORTION(%)	50	40	10
RAINFALL (mm)	Approximate Annual Rainfall: 500-625		
GEOLOGY	Jurassic Dolerite		
TOPOGRAPHY	Hills		
Position	Crests/Upper Slopes	Mid/Lower Slopes	Flats/Drainage Lines
Typical Slope()	10	10-20	0-5
NATIVE VEGETATION Structure Floristic Association (See Appendix 1 for common names)		Woodland	
	<i>Eucalyptus viminalis</i>	<i>Eucalyptus rubida</i>	<i>Eucalyptus ovata</i>
	<i>Eucalyptus rubida</i>	<i>Eucalyptus pauciflora</i>	<i>Lomandra longifolia</i>
	<i>Lomandra longifolia</i>	<i>Anguillaria dioica</i>	<i>Acacia melanoxylon</i>
	<i>Themeda australis</i>	<i>Lomandra longifolia</i>	
	<i>Casuarina stricta</i>	<i>Lissanthe strigosa</i>	
	<i>Acacia dealbata</i>	<i>Bursaria spinosa</i>	
	<i>Acacia mearnsii</i>	<i>Banksia marginata</i>	
	<i>Casuarina stricta</i>		
SOIL			
Surface(A)Texture	Clay Loam	Clay Loam	Light Clay
B Horizon(subsoil) Colour (moist) Texture and primary profile form	Shallow, stony, medium clay. Dark brown (7.5 YR 3/4) on bedrock. Duplex.	Shallow, stony, heavy clay - dark brown (7.5 YR 3/2) to dark yellowish brown (10 YR 4/6). Duplex.	Deep medium clay - black (10 YR 2/1) to very dark greyish brown (10 YR 3/2) with yellow brown (10 YR 5/8) mottle. Gradational.
Permeability	Moderate/High	Moderate/High	Low
Typical depth(m)	0.45	0.50	0.90
LAND USE		Grazing	
HAZARDS	Low Sheet, Rill Erosion	Moderate Gully Erosion	Flooding, Waterlogging

272242

ISIS HILLS

This widespread land system includes rolling dolerite hills and associated flats in the midlands from west of Campbell Town to near Bothwell.

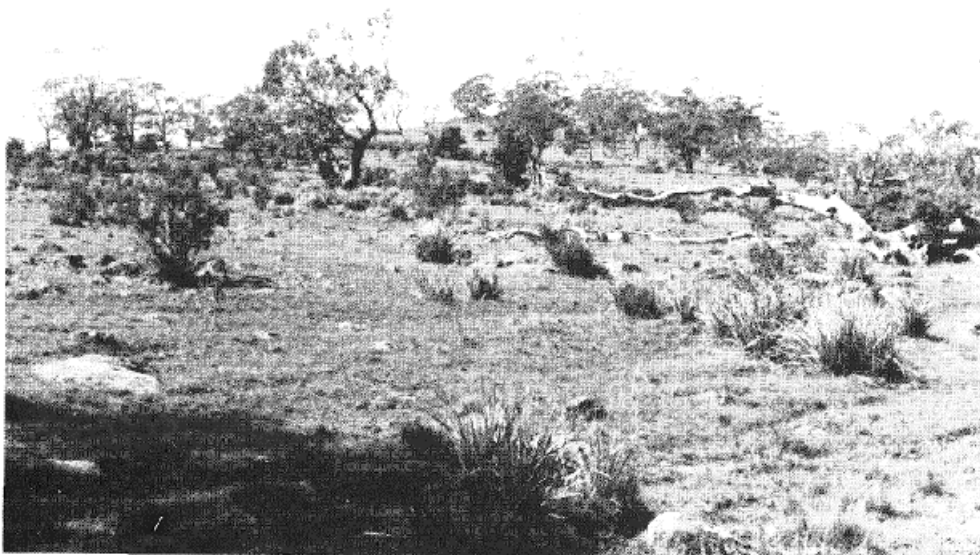
Crests and upper slopes typically contain a shallow (0.45 m), stony, duplex soil consisting of a clay loam surface over a dark brown medium clay developed on bedrock. This commonly supports a woodland dominated by *Eucalyptus viminalis* and *Eucalyptus rubida* over an understorey of *Lomandra longifolia*, *Themeda australis*, *Casuarina stricta*, *Acacia dealbata* and *Acacia mearnsii*.

Mid and lower slopes commonly contain a shallow (0.50 m) duplex soil with a clay loam surface over a dark brown to dark yellowish brown heavy clay. This supports a woodland dominated by *Eucalyptus rubida* and *Eucalyptus pauciflora* over an understorey that includes *Lomandra longifolia*, *Lissanthe strigosa*, *Bursaria spinosa*, *Banksia marginata*, *Casuarina stricta* and *Casuarina littoralis*.

Flats and drainage lines usually have a deep (0.90 m) gradational soil consisting of a light clay surface over a black to very dark greyish brown medium clay with a yellow brown mottle.

Grazing is the major land use. The country is not particularly prone to erosion although gully erosion is sometimes a problem. Flooding and waterlogging occur on drainage flats.

The land system is closely related to the Stony Hills (272141), She Oak Spur (172131), St Peters Pass (272251), and Eastern Tiers (372241) Land Systems.



Stony dolerite hills in the Isis Hills (272242) Land System dominated by *Eucalyptus viminalis* and *Eucalyptus rubida*.



Crest of the Isis Hills Land System containing a stony duplex soil developed on dolerite bedrock.