

LAND SYSTEM
Bushy Park Plains

298122

Area (ha):
6450

COMPONENT	A	B	C	D
PROPORTION(%)	25	25	25	25
RAINFALL(mm)	Approximate Annual Rainfall: 500-625			
GEOLOGY	Quaternary Deposits (Clays, Sands, Gravels, Silts)			
TOPOGRAPHY	Alluvial Flats			
Position	Upper Terraces	Upper Terraces	Lower Terraces	Floodplains
Typical Slope()	2	1	0	0
NATIVE VEGETATION				
Structure	Woodland			
Floristic Association (See Appendix 1 for common names)	Eucalyptus viminalis		Eucalyptus viminalis	
	Acacia melanoxylon		Pomaderris apetala	
	Acacia dealbata		Exocarpos cupressiformis	
	Eucalyptus rubida		Acacia dealbata	
			Acacia verticillata	
			Acacia melanoxylon	
SOIL				
Surface(A)Texture	Sandy Clay Loam	Loamy Sand	Fine Sandy Loam	Silty Clay Loam
B Horizon(subsoil) Colour (moist) Texture and primary profile form	Deep clayey sand - brown/ dark brown (7.5 YR 4/4). Complex.	Deep sandy clay - greyish brown (2.5 Y 5/2) with yellowish brown (10 YR 5/6) mottle. Duplex.	Deep medium clay - dark reddish brown (5 YR 3/2) to dark yellowish brown (10 YR 3/6). Duplex.	Deep friable, silty clay loam- dark brown (10 YR 3/3) to very dark grey (10 YR 3/1). Uniform.
Permeability	Moderate	Moderate	Moderate	Moderate
Typical depth(m)	> 1.40	>1.40	>1.40	>1.40
LAND USE		Cropping, Grazing,		Hop Growing
HAZARDS	Moderate/High Sheet, Rill Erosion			Flooding, Riverbank Erosion

298122

BUSHY PARK PLAINS

This land system includes alluvial plains on the Derwent River and the lower reaches of the Lachlan River. The main occurrence is between Bushy Park and Macquarie Plains.

Upper terraces have a deep (>1.40 m) complex soil, with a sandy clay loam surface over a brown or dark brown clayey sand. Upper terraces also contain a deep (>1.40 m) duplex soil consisting of a loamy sand surface over a greyish brown sandy clay with a yellowish brown mottle.

Lower terraces commonly contain a deep (>1.40 m) duplex soil consisting of a fine sandy loam surface over a dark reddish brown to dark yellowish brown medium clay. The terraces support woodland dominated by *Eucalyptus viminalis* and *Eucalyptus rubida* with *Acacia melanoxylon* and *Acacia dealbata* being common understorey species.

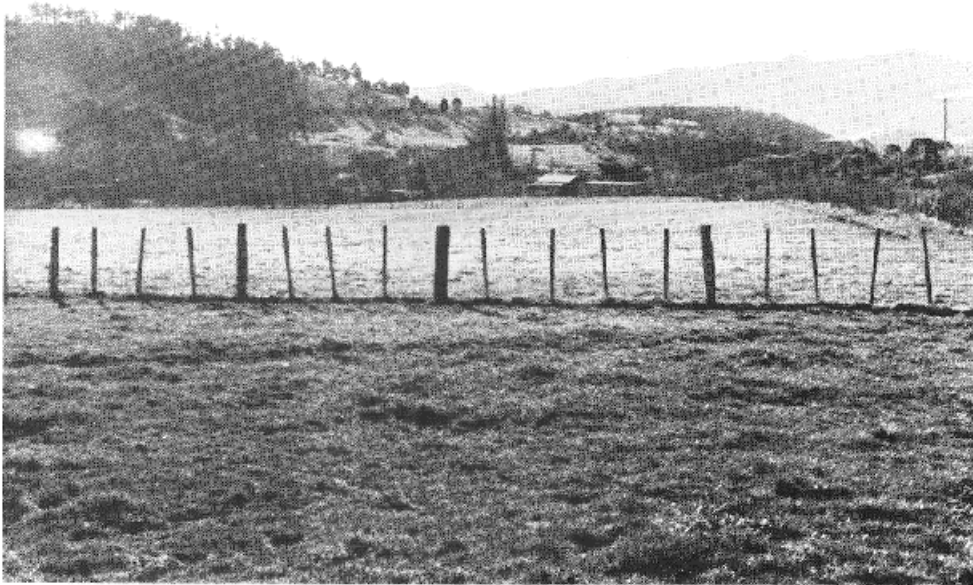
Floodplains contain a deep (>1.40 m) friable, uniform dark brown to very dark grey silty clay loam.

Cropping particularly of hops, and grazing are the major land uses in this area which contains some deep, very fertile, friable soils. Sheet and rill erosion are hazards on the sandy terraces whilst flooding and riverbank erosion occur on the floodplains.



River Derwent alluvial soils in the Bushy Park Plains (298122)
Land System

BUSHY PARK PLAINS (298122) LAND SYSTEM



Alluvial soils of the Bushy Park Plains (298122) Land System on the lower reaches of the Lachlan River near New Norfolk.