

393123

LULWORTH

Old coastal dunes and plains formed on Quaternary siliceous marine sands and clays represent a former coastline from Low Head to Noland Bay in the north of Region 4. Land exposed by the receding sea now forms the more recent dunes of Waterhouse Beach Land System (395161).

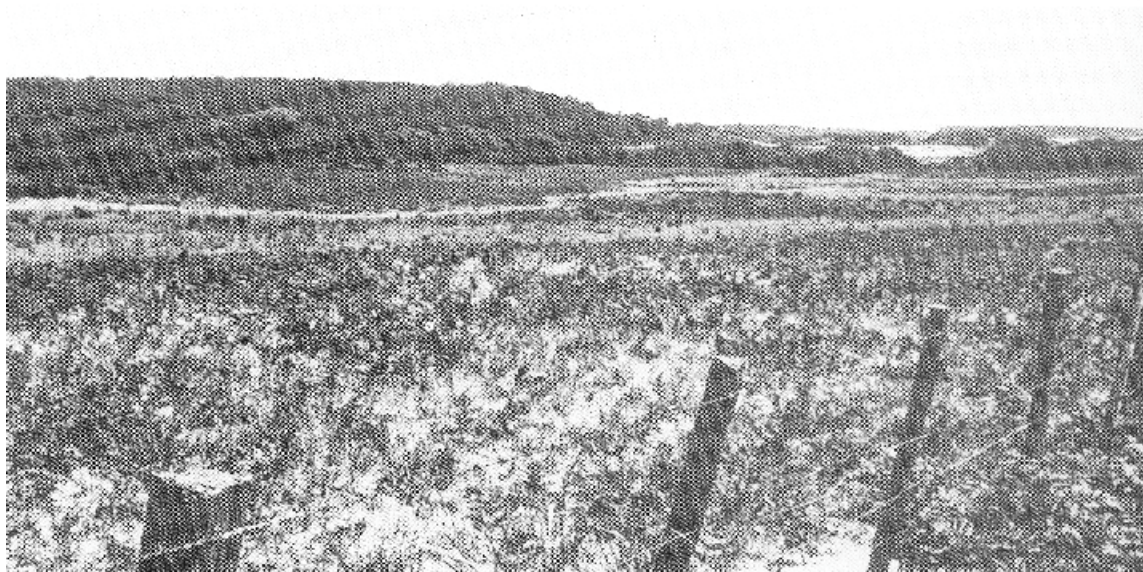
The sand soils on the old coastal plain and dunes have an organic-iron layer at depth. Mottled duplex

soils occur in the swales between the dunes and plain.

The vegetation is dominated by black peppermint and swamp gum, with coast wattle and paperbark the main understorey plants.

Grazing is the major land use and most of the area has been sown to improved pasture. Other land uses include cropping, recreation and nature conservation.

Wind erosion is the major hazard, although gully erosion poses a problem in the swales.



Sand plains.

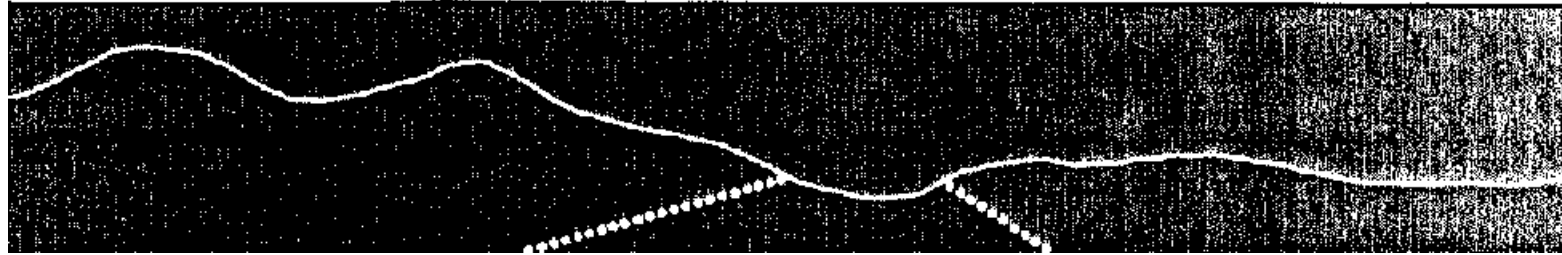
Vegetation on the old dunes.



LAND SYSTEM

393123

Lulworth



COMPONENT	1	2	3
PROPORTION %	50	10	40
CLIMATE	Average Annual Rainfall 625-750 mm		
GEOLOGY	Quaternary sands and clays		
TOPOGRAPHY			
Land form		Old coastal dunes and plains	
Position	Old dunes	Swales	Plains
Average Sideslope °	3	2	1
NATIVE VEGETATION			
Structure	Low woodland	Open-woodland	Low open-woodland
Association	Black peppermint, swamp gum, coast wattle, honeysuckle, <i>Pimelea linifolia</i>	Swamp gum, black peppermint, sedges and rushes	Black peppermint, swamp gum, paperbark, bull-oak, <i>Melaleuca gibbosa</i>
SOIL	Grey (5 YR 6/1) sand soil, uniform texture, organic-iron B horizon	Mottled grey (10 YR 6/1) brownish yellow (10 YR 6/8) duplex soil	Pale brown (10 YR 6/3) sand soil, uniform texture, iron-organic B horizon
Surface Texture	Sand	Sandy loam	Loamy sand
Permeability	High	Moderate	
Average Depth m		>2.0	
PRESENT LAND USE	Grazing, cropping, recreation, nature conservation		
HAZARDS	Moderate wind erosion	Moderate wind and gully erosion	Low wind erosion