

LAND SYSTEM
St Patricks Foreland

441134

Area (ha):
2146

COMPONENT	A	B	C	D	E
PROPORTION (%)	20	20	20	20	20
RAINFALL (mm)	Approximate Annual Rainfall: 750-1000				
GEOLOGY	Devonian Granite				
TOPOGRAPHY	Slopes and Associated Coastal Flats				
Position	Upper Slopes	Exposed Ridges/Slopes	Lower Slopes/Flats	Sandy Lower Slopes/Flats	Sandy Coastal Flats
Typical Slope ()	10	10	0-5	0-5	0-5
NATIVE VEGETATION	Low Open Forest				
Structure	Over Heath	Open Forest		Woodland	
Floristic Association (See Appendix 1 for common names)	<i>Eucalyptus globulus</i>	<i>Eucalyptus sieberl</i>		<i>Eucalyptus globulus</i>	
	<i>Eucalyptus brookerana</i>	<i>Lepidosperma concavum</i>		<i>Eucalyptus amygdalina</i>	
	<i>Kunzea ambigua</i>	<i>Epacris impressa</i>		<i>Lomandra longifolia</i>	
	<i>Acacia dealbata</i>	<i>Hibbertia riparia</i>		<i>Acacia dealbata</i>	
	<i>Casuarina littoralis</i>	<i>Goodenia lanata</i>		<i>Pteridium esculentum</i>	
	<i>Themeda australis</i>	<i>Aotus ericoides</i>		<i>Diplarrena moraea</i>	
	<i>Hypoxis hygrometrica</i>	<i>Astroloma humifusum</i>		<i>Viola hederacea</i>	
	<i>Leptospermum scoparium</i>	<i>Acacia myrtifolia</i>			
	<i>Viola hederacea</i>	<i>Gahnia sp.</i>			
	<i>Schoenus apogon</i>	<i>Lomatia tinctoria</i>			
		<i>Casuarina littoralis</i>			
		<i>Pteridium esculentum</i>			
SOIL					
Surface (A) Texture	Sandy Clay Loam	Loamy Sand/Clay Loam	Clay Loam	Sandy Loam/ Sandy Clay Loam	Sandy Loam
B Horizon (subsoil) Colour (moist) Texture and primary profile form	Deep gravelly sandy	Deep gravelly medium clay-	Extremely shallow clay loam	Sandy clay - greyish	Deep black (2.5 Y 2/0) -
	yellowish brown (10 YR 5/6) with greyish brown (2.5 Y 5/2) mottle.	yellowish brown (10 YR to light grey/grey (10 , 6/1).	Black (10 YR 2/1) to dark brown (10 YR 2/2) bedrock.	(2.5 Y 5/2) to dark grey (10 YR 4/1) with a brown (10 YR 5/8) mottle.	sandy loam over gravelly, dark reddish brown (5 YR 3/3) sand.
	Duplex .	Duplex .	Uniform.	Duplex .	Complex .
Permeability	Moderate	Moderate	High	Moderate	Moderate/High
Typical depth(m)	>1.40	1.10	0.20	>1.40	1.00
LAND USE	Grazing, Shack Subdivision				
HAZARDS	Moderate/High Sheet, Rill, Gully and Streambank Erosion				

441134

ST PATRICKS FORELAND

This land system is located in the north-eastern corner of the study area and includes granite slopes and coastal flats between Chain of Lagoons and Falmouth.

Upper slopes contain a deep (>1.40 m), duplex soil consisting of a gravelly, sandy clay loam surface over a yellowish brown sandy clay with a greyish brown mottle. This supports a low open forest dominated by *Eucalyptus globulus* and *Eucalyptus brookerana* with a heath understorey dominated by *Kunzea ambigua*, *Acacia dealbata* and *Casuarina littoralis*.

Exposed ridges and slopes have a deep (1.10 m), duplex soil with a loamy sand to clay loam surface over a gravelly, yellowish brown, medium clay with a light grey to grey mottle. This supports an open forest dominated by *Eucalyptus sieberi* over a heathy understorey.

Lower slopes and flats contain an extremely shallow (0.20 m), uniform, black to very dark brown clay loam developed on bedrock. Sandy lower slopes and flats have a deep (>1.40 m), duplex soil with a sandy loam to sandy clay loam surface over a greyish brown to dark grey, sandy clay with a yellowish brown mottle. This supports a woodland dominated by *Eucalyptus globulus* and *Eucalyptus amygdalina* with an understorey of *Lomandra longifolia*, *Acacia dealbata* and *Pteridium esculentum*.

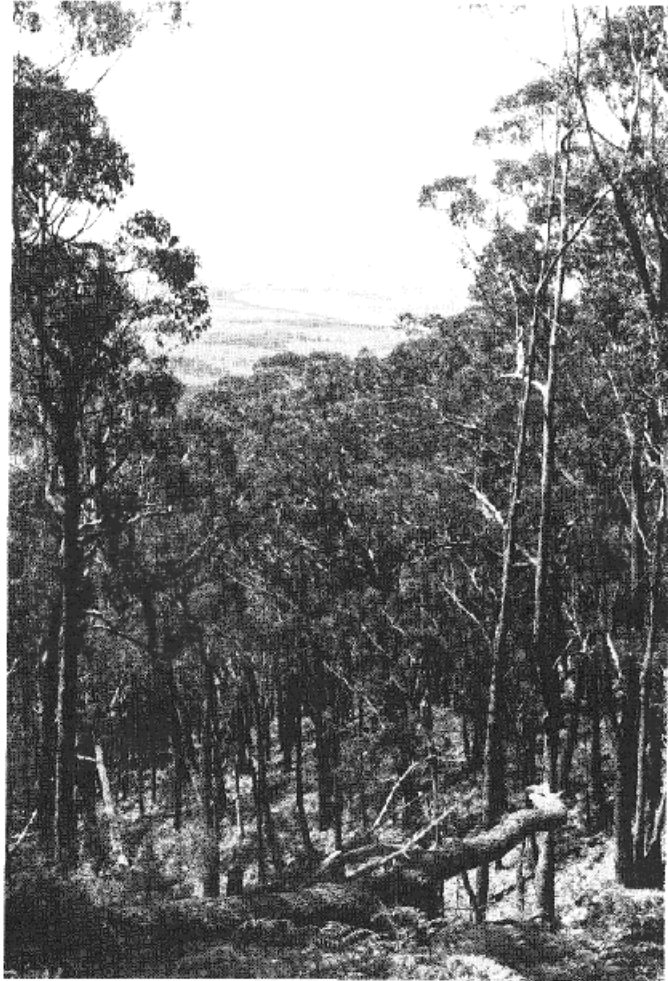
The land system is mainly used for grazing and shack subdivision. It is particularly prone to sheet, rill, gully, and streambank erosion. There is a close relationship with the more rugged St Marys Pass (541151) Land System found at higher altitudes.



Sandy coastal flats in the St Patricks Foreland (441134) Land System dominated by *Eucalyptus globulus* with an understorey of *Pteridium esculentum* and *Lomandra longifolia*.

ST PATRICKS FORELAND (441134) LAND SYSTEM

Exposed ridges and slopes dominated by Eucalyptus sieberi with the Chain of Lagoons in the background. St Patricks Foreland (441134) Land System.



RUSSELL FALLS (464141) LAND SYSTEM PHOTO [See description two pages on.]

Exposed slopes in the Russell Falls (464141) Land System dominated by Eucalyptus amygdalina and Eucalyptus obliquo with an open heathy understorey of Daviesia latifolia.

