

493125

UPPER ESK

Associated with the South Esk River, Dans Rivulet and Evercreech Rivulet in the Upper Esk-Fingal area are undulating plains formed on Quaternary clays and sands.

Deep mottled gradational and uniform clay soils have developed on these deposits. These soils have been strongly influenced by the surrounding Mathinna Bed deposits of the Golden Gate

(453241), Sideling (553241) and Alberton (653341) Land Systems.

Black peppermint and white gum dominate the woodland vegetation on the upper component. No remnants of native vegetation were found on the lower component.

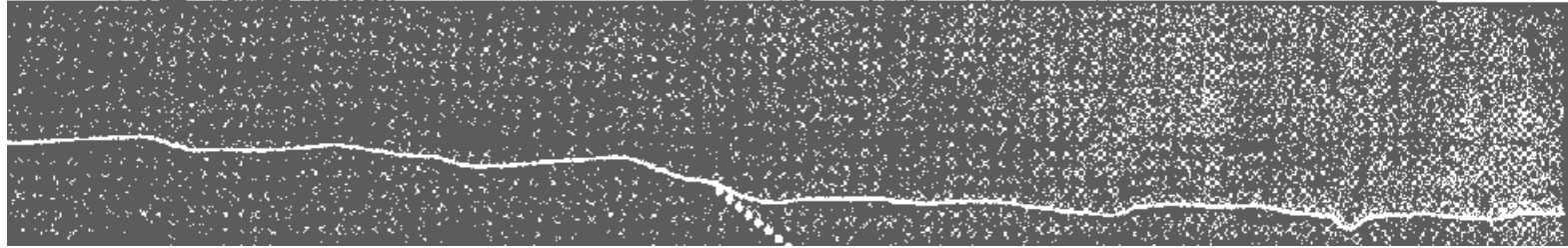
Most of the area has been cleared and sown to pasture for grazing, although small pockets remain undeveloped.

Major hazards are sheet and gully erosion and flooding.

LAND SYSTEM

493125

Upper Esk



COMPONENT	1	2
PROPORTION %	45	55
CLIMATE	Average Annual Rainfall 750-1 000 mm	
GEOLOGY	Quaternary clays and sands	
TOPOGRAPHY		
Land form	Undulating plains	
Position	Upper plains	Lower plains and drainage lines
Average Sideslope °	1	1
NATIVE VEGETATION	Woodland	No remnants
Structure		
Association	Black peppermint, white gum, swamp gum, black wattle, prickly mimosa	
SOIL	Mottled brown (7.5 YR 5/4) grey (10 YR 6/1) gradational soil	Dark brown (7.5 YR 3/2) clay soil, uniform texture
Surface Texture	Clay loam	Light clay
Permeability	Moderate	Low
Average Depth m	1.8	>2.0
PRESENT LAND USE	Grazing, nature conservation	
HAZARDS	Low sheet and gully erosion	