

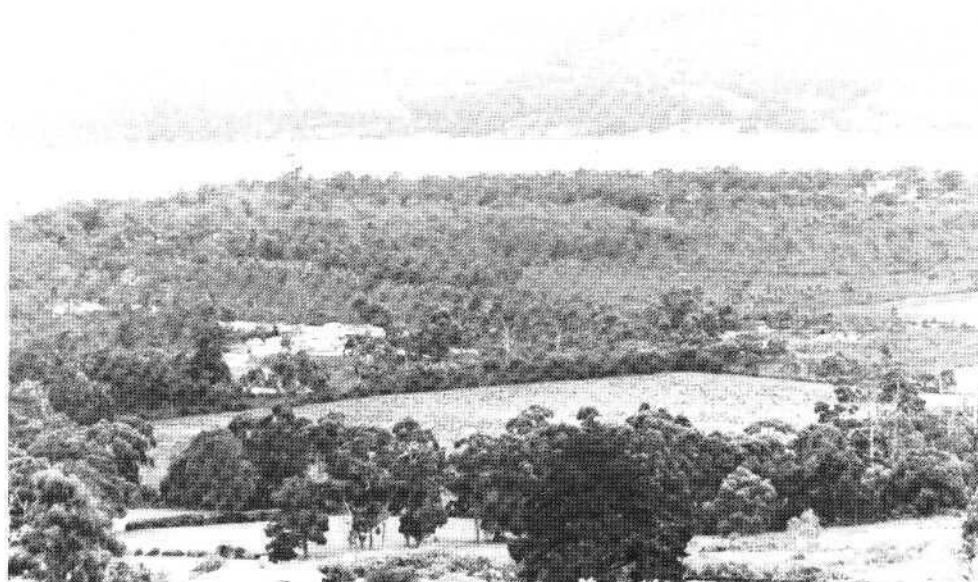
498124

RANDALLS BAY FLATS

This small land system is located at Randalls Bay south of Cygnet near Garden Island on recent deposits of sands, clays and gravels.

The flats contain a sandy, duplex soil consisting of a black sandy loam surface over a light grey to grey sand over a black, sandy clay loam. This supports a woodland dominated by *Eucalyptus tenuiramis*, or occasionally *Eucalyptus amygdalina*, with a heathy understorey that includes *Leptospermum scoparium*, *Leptospermum glaucescens*, *Casuarina monilifera*, *Epacris impressa*, *Leucopogon collinus*, *Gompholobium huegelii*, *Patersonia* sp, *Aotus ericoides*, *Restio monocephalus* and *Banksia marginata*. Drainage depressions include heaths dominated by *Melaleuca squarrosa*.

Subdivision and gravel mining are the major land uses. Sheet, rill and gully erosion are potential hazards in the area due to the sandy nature of the soils.



*Randalls Bay Flats (498124) Land System (foreground) dominated by Eucalyptus tenuiramis.*

LAND SYSTEM  
Randalls Bay Flats

498124

Area(ha):  
163

COMPONENT	A
PROPORTION ( % )	100
RAINFALL(mm)	Approximate Annual Rainfall: 750-1000
GEOLOGY	Quaternary Sands, Clays, Gravels
TOPOGRAPHY	Undulating Plains
Position	Flats
Typical slope(o)	1
NATIVE VEGETATION	
Structure	Woodland/Heath
Floristic	Eucalyptus tenuiramis
As sociation	(Eucalyptus amygdalina)
(See Appendix 1	Leptospermum scoparium
for common	Leptospermum glaucescens
names)	Casuarina monilifera
	Epacris impressa
	Leucopogon collinus
	Gomjoholobium huegelii
	Patersonia sp.
	Aotus ericoides
	Restio monocephalus
SOIL	
Surface(A)Texture	Sandy Loam
B Horizon (subsoil) Colour	Sandy clay loam - Black ( 1 0 Y
(moist) Texture and	R 2 / 1 ) Duplex
primary profile	
form	
Permeability	High
Typical depth(m)	0.65
LAND USE	Subdivision, Gravel Mining
HAZARDS	Moderate/High Sheet, Rill, Gully Erosion