

513142

EMU RIVER

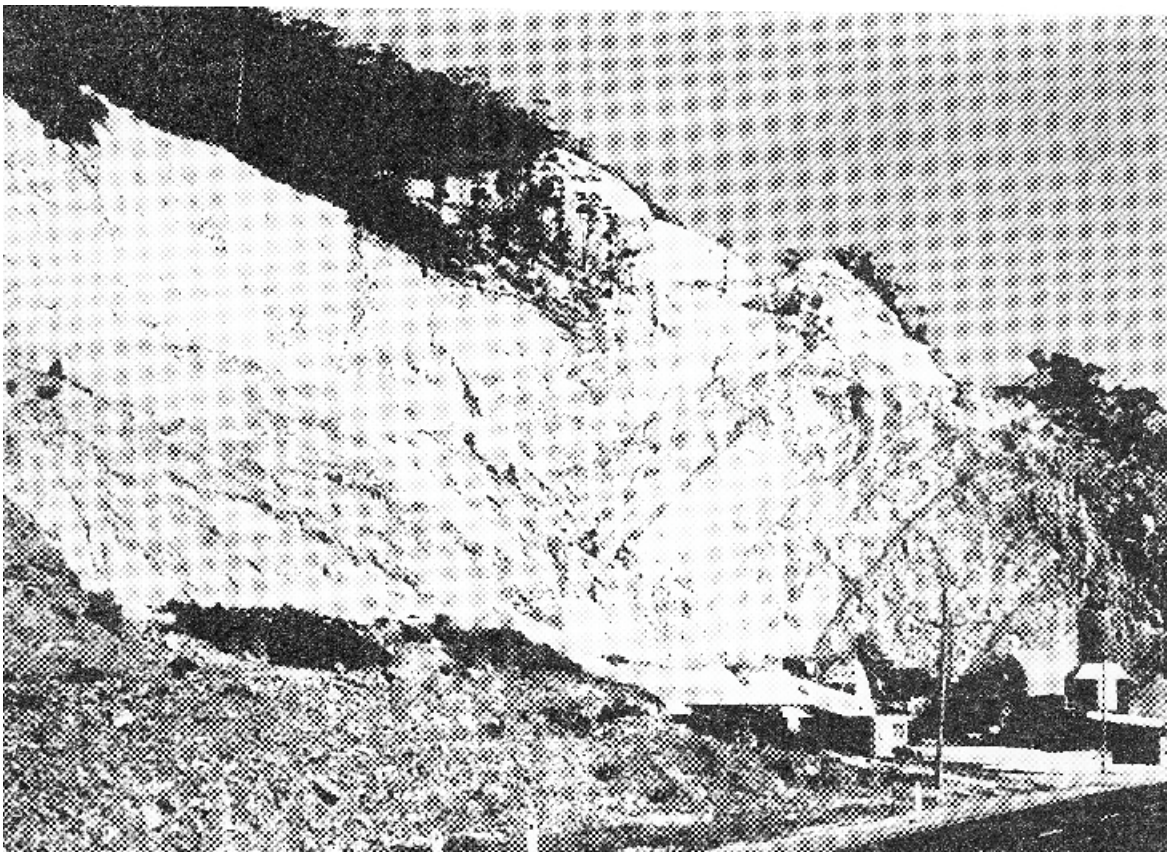
Emu River land system occupies the steep sided valleys along the lower reaches of the Cam, Emu and Blythe Rivers Penguin Creek and along Sea brook Creek south of Wynvard It has resulted from the deep entrenchment of streams into mainly siliceous Precambrian sediments A further occurrence is the ridge situated more or less parallel with the coast, between Blythe Heads and Wivenhoe and which includes the well known land mark of Round Hill

A gravelly, yellow, duplex soil covers the crests but the system is characterised by the far greater extent of gravelly, grey sands which cover the steep slopes

A forest and heath community clothes most of the area, with tall forest on the deeper sands along the sheltered valley floors The principal species are black peppermint and stringybark with an understorey of manuka and honeysuckle

The nature of the topography and soils has precluded the clearing of these areas for cultivation and grazing Timber is taken but these areas also act as important zones of nature conservation A large rock quarry and crushing plant is located at Round Hill near Burnie

There is a high sheet and rill erosion hazard on the steep slopes and this presents a high siltation hazard to the lower slopes and valley floors

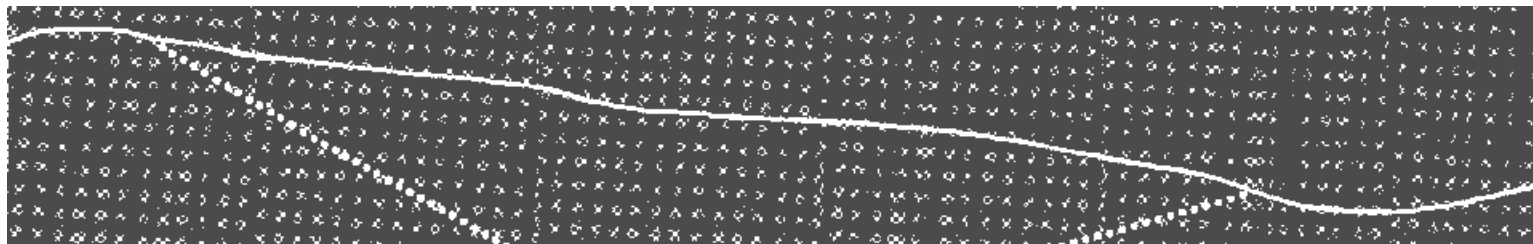


The rock quarry and crushing plant at Round Hill near Burnie

LAND SYSTEM

513142

Emu River



COMPONENT	1	2	3
PROPORTION %	10	70	20
CLIMATE	Average Annual Rainfall 1 000-1 250 mm		
GEOLOGY	Precambrian conglomerate, sandstone, quartzites, slates		
TOPOGRAPHY	Hills, mainly steep river valleys		
Land form	Hills, mainly steep river valleys		
Position	Crests	Steep slopes	Swales, lower SE slopes
Average Sideslope °	7	25	10
NATIVE VEGETATION	Open forest, open heath		Tall open forest
Structure	Open forest, open heath		Tall open forest
Association	Black peppermint, manuka, heath, bracken	Stringybark, black peppermint, manuka, heath, <i>pogon collinus</i>	bracken, honeysuckle, <i>Acacia myrtifolia</i> , <i>Leuco</i>
SOIL	Gravelly, yellow (10 YR 7/6) duplex soils	Gravelly, grey (10 YR 5/1) sand soil, uniform texture, siliceous gravel pan	Grey (10 YR 5/1) sand soil, uniform texture, grey (10 YR 5/1) sand pan
Surface Texture	Gravelly sandy clay loam	Loamy sand	
Permeability	Moderate	High	
Average Depth m	1.5	0.5	0.8
PRESENT LAND USE	Forestry, quarrying, nature conservation		
HAZARDS	Moderate sheet erosion	High rill, gully erosion	High siltation and rill erosion