

541131

WEST SCOTTSDALE

Occurring in the Nabowla-West Scottsdale, Branxholm-Pioneer-St Helens, Goshen-Pyengana and South Springfield-Kamona areas, are low hills formed on Devonian granite and granodiorite.

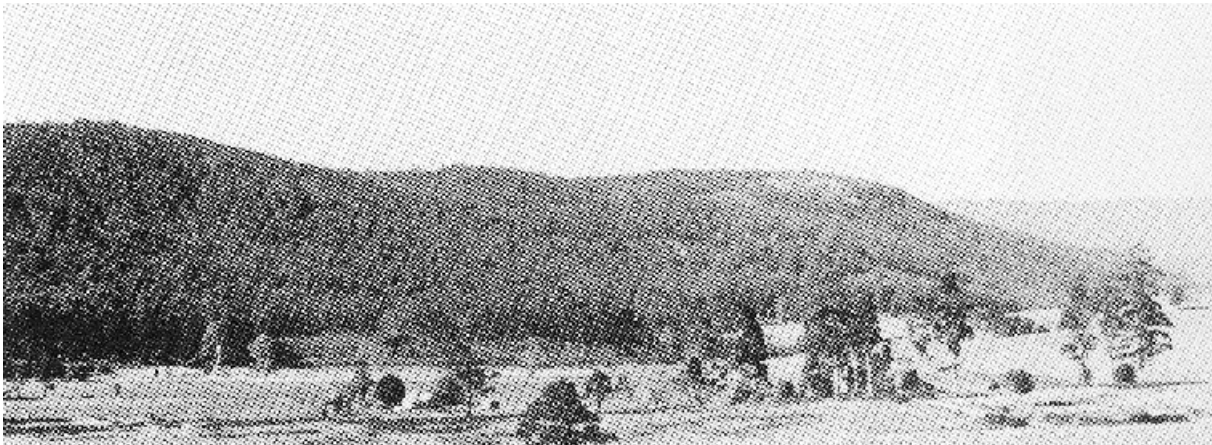
Gradational soils with gravelly surfaces have developed on all components except the lower slopes, where there is a gritty duplex soil. Rock

outcrops are common on the rugged steep upper slopes.

Stringybark, stringy gum and black peppermint dominate the open-forest vegetation. The main understorey plants are silver wattle, *Casuarina monilifera*, prickly box and guitar plant.

Forestry, including both hardwood and softwood, is by far the greatest land use. Large areas of pine plantations are found scattered throughout the system. Small areas remain undeveloped, while others have been cleared for grazing.

The major hazards are sheet and rill erosion.

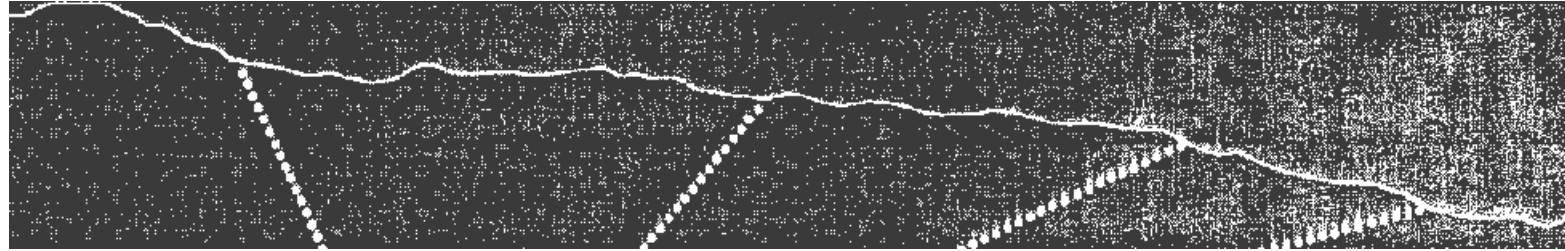


Mid and lower slopes.

LAND SYSTEM

541131

West Scottsdale



COMPONENT	1	2	3	4	5
PROPORTION 7.	15	35	25	15	10
CLIMATE	Average Annual Rainfall 1 000-1 250 mm				
GEOLOGY	Devonian granite and granodiorite				
TOPOGRAPHY			Low hills		
Land form					
Position	Steep upper slopes	Gentle upper slopes	Mid slopes	Lower slopes	Gentle lower slopes
Average Sideslope°	18	9	6	10	4
NATIVE VEGETATION		Tall open-forest		Open-forest	
Structure					
Association	Stringybark, black peppermint, she-oak, silver wattle, heath, <i>Casuarina monilifera</i> , prickly box, guitar plant	Stringy gum, Stringybark, white gum, cabbage gum, silver wattle, bull-oak, <i>Casuarina monilifera</i> , <i>Acacia mucronata</i>	Stringy gum, white gum, Stringybark, silver wattle, prickly mimosa, manuka, guitar plant, prickly box	White gum, black peppermint, bull-oak, manuka, prickly mimosa, bracken fern	Stringybark, black peppermint, sunshine wattle, silver wattle, native cherry, manuka, heath
SOIL	Dark brown (10 YR 4/3) gradational soil	Yellowish red (5 YR 5/8) gradational soil	Brown (7.5 YR 5/4) gradational soil	Gritty, red (2.5 YR 4/6) duplex soil	Strong brown (7.5 YR 5/8) gradational soil
Surface Texture		Gravelly clay loam		Gritty loam	Gravelly clay loam
Permeability			Moderate		
Average Depth m	1.0	1.3	1.1	1.4	1.1
PRESENT LAND USE	Forestry, nature conservation, grazing				
HAZARDS	Severe sheet erosion	Moderate sheet and rill erosion		Low sheet and rill erosion	