

573131

BROWNS HILL

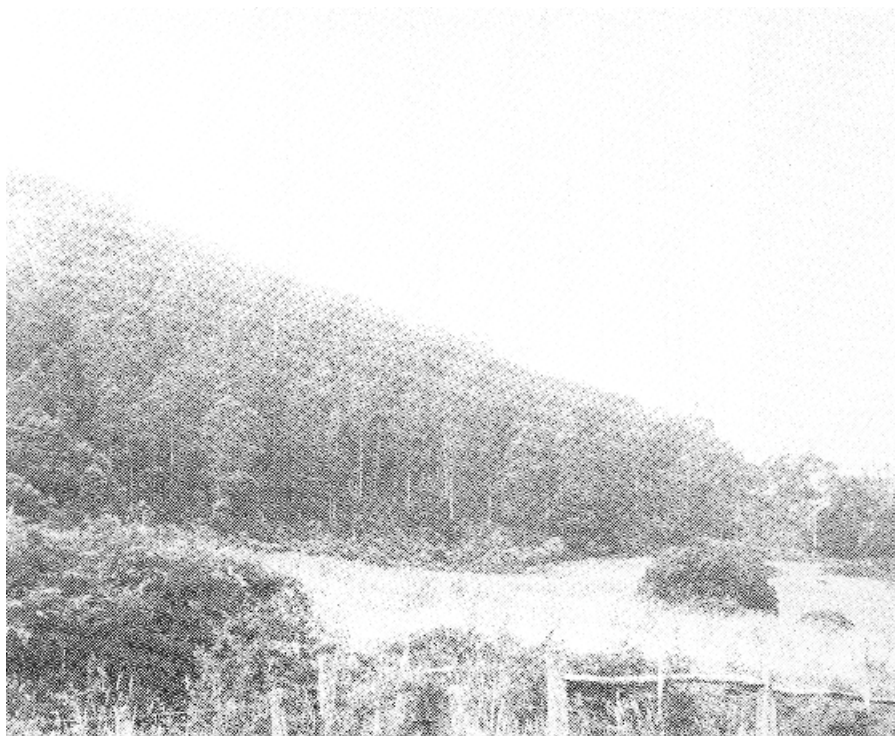
Limited to two occurrences near Underwood (surrounding Browns Hill) and to the east of Parkham, this system comprises low hills formed on Triassic sandstones.

Sandy duplex or gradational soils have developed on these deposits. The surface layer of these soils is often shallow, and in some cases is absent as a result of erosion.

The open-forest vegetation is predominantly white gum, black peppermint, swamp gum and *Acacia* spp.

Grazing, forestry and nature conservation are the major land uses.

The sandy soils are prone to sheet, gully and wind erosion, especially on the steeper slopes. Serious sheet and gully erosion has occurred in many parts of the system.



Lower slopes.

LAND SYSTEM

573131

Browns Hill



COMPONENT	1	2	3
PROPORTION %	25	45	30
CLIMATE	Average Annual Rainfall 1 000-1 250 mm		
GEOLOGY	Triassic sandstones		
TOPOGRAPHY			
Land form		Low hills	
Position	Upper slopes and crests	Mid slopes	Lower slopes and swales
Average Sideslope °	10	7	3
NATIVE VEGETATION	Open-forest		
Structure			
Association	White gum	White gum, black peppermint, blackwood, bracken fern	Swamp gum, black peppermint, silver wattle
SOIL	Dark reddish brown (5 YR 3/2) duplex soil	Strong brown (7.5 YR 5/8) duplex soil	Yellowish red (5 YR 4/6) gradational soil
Surface Texture	Loamy sand	Sandy loam	
Permeability	Moderate		
Average Depth m	0.6	,5	1.3
PRESENT LAND USE	Grazing, forestry, nature conservation		
HAZARDS	Moderate sheet erosion and low wind and gully erosion	Low sheet erosion	