

593123

TONGANAH

These undulating plains and creek flats formed on Quaternary clays and sands in the Scottsdale-Derby area, are associated with the Great Forester, Ringarooma and Dorset Rivers and the Legerwood Rivulet.

The colour and gravel content of the duplex soils on the upper and lower terraces have been strongly influenced by the granite, sandstones and mudstones

of the adjoining West Scottsdale (541131) and Sideling (553241) Land Systems. The soil profile on the creek flats and drainage lines is a complex one, with a uniform clay soil overlying a gley.

Stringybark and black peppermint dominate the open-forest and woodland vegetation.

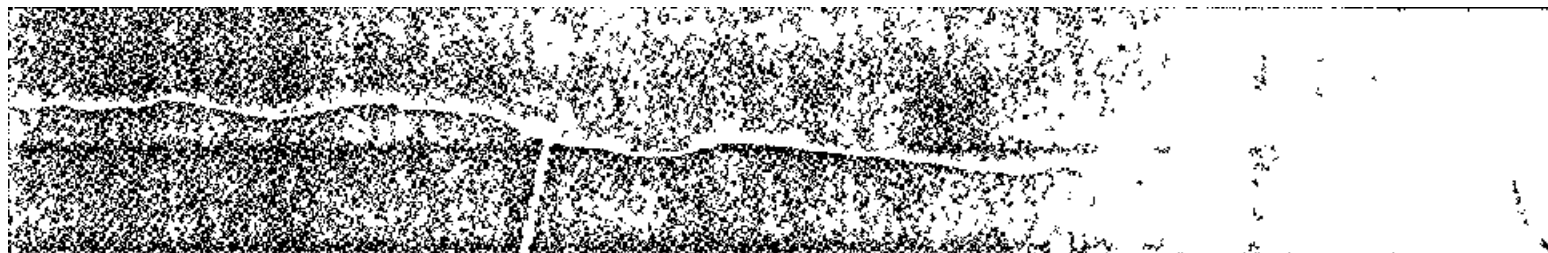
Almost the entire area remains undeveloped. Small areas are used for forestry, hop growing and grazing. Clay is mined in certain localities.

Sheet, rill and streambank erosion and waterlogging are the main hazards. Some areas are subject to inundation after heavy rains.

LAND SYSTEM

593123

Tonganah



COMPONENT	1	2	3
PROPORTION %	35	40	25
CLIMATE	Average Annual Rainfall 1 000-1 250 mm		
GEOLOGY	Quaternary clays and sands		
TOPOGRAPHY			
Land form		Undulating plains and creek flats	
Position	Upper terrace	Lower terrace	Creek flats and drainage lines
Average Sideslope °	2	2	1
NATIVE VEGETATION			
Structure	Open-forest	Woodland	
Association	Stnngybark, black peppermint, silver wattle, native cherry, manuka, prickly mimosa	Stnngybark, black peppermint, sunshine wattle, silver wattle, native cherry, manuka, native gorse	Stnngybark, black peppermint, swamp gum, button grass
SOIL	Gravelly, mottled strong brown (7 5 YR 5/6) grey (10 YR 6/1) duplex soil	Yellowish brown (10 YR 5/6) duplex soil	Dark yellowish brown (10 YR 4/4) clay soil, uniform texture, overlaying a grey (N4) gley
Surface Texture	Gravelly loam		Light clay
Permeability	Moderate		Low
Average Depth m	1 1	1 3	> 2 0
PRESENT LAND USE	Nature conservation, forestry, hop growing, grazing, clay mining		
HAZARDS	Low sheet and nil erosion		Waterlogging and stream bank erosion