

693111

MONTAGU RIVER

Broad stretches of level to undulating plain have developed on the Quaternary sand deposits located along the Duck, Montagu and Welcome Rivers. It is the wetter counterpart of Plains land system with which it has a gradual boundary in the north. The southern boundary is also gradual where the sandy deposits lens out over the underlying Precambrian strata.

The complex zone of soils along the system's eastern and western margins, where it is bordered by higher country, is explained in the description of Plains land system. Light grey sands with a sand pan at about 0.7 m predominate on the lower terrace, while in the drainage lines is a dark grey

sandy clay soil. Precambrian rocks outcrop in the major channels.

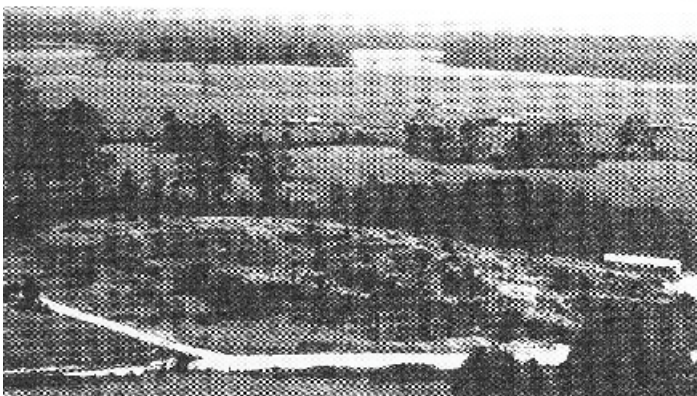
Along the drainage lines is a closed scrub of leatherwood, manuka cutting grass and myrtle with sassafras and celery-top pine. Elsewhere Smithton peppermint and swamp gum form an open forest canopy with a dense understorey which includes *Acacia mucronata*, leatherwood, manuka, lancewood, and woolly tea-tree with hardwater fern and cutting grass.

Round Togari parts of this land system have been cleared and drained for grazing, but it mainly remains timbered, with nature conservation and forestry as the main land uses.

The low relief and poorly drained nature of the soils presents a high hazard of waterlogging over most of the system.



*The dense native vegetation still covers most of this system
The higher country along the horizon is Pagans Road land system*



Areas cleared for grazing along the Duck River

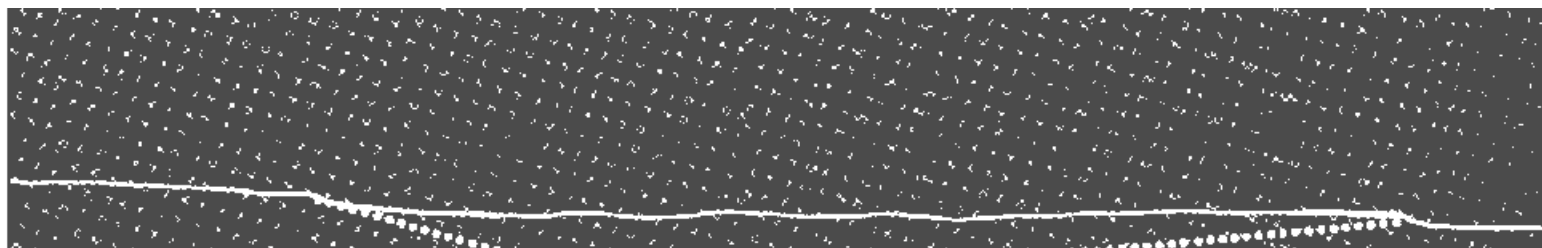


*River recently dredged to facilitate drainage of
the Togari area*

LAND SYSTEM

693111

Montagu River



COMPONENT	1	2	3
PROPORTION %	20	70	10
CLIMATE	Average Annual Rainfall 1 250-1 500 mm		
GEOLOGY	Quaternary sand deposits		
TOPOGRAPHY	Level plain		
Land form	Level plain		
Position	Higher terrace	Lower terrace	Drainage
Average Sideslope °		<1	
NATIVE VEGETATION			
Structure	Open forest, closed scrub		Closed scrub
Association	Smithton peppermint, swamp gum, <i>Acacia mucronata</i> , leather-wood, scrambling coral fern, <i>Montoca</i> sp, manuka, lancewood, woolly tea tree, hardwater fern, cutting grass		Leatherwood, manuka, cutting grass, myrtle, horizontal, <i>Melaleuca squarrosa</i> , sassafras, celery top pine
SOIL	Complex	Light grey (10 YR 6/1) fine sand soil with a sand pan	Dark grey (10 YR 4/1) sandy clay soil, uniform texture
Surface Texture			Peat
Permeability			High
Average Depth m		0 7	1 8
PRESENT LAND USE	Nature conservation, forestry, grazing		
HAZARDS	Low sheet and rill erosion	High waterlogging, low flooding	