

822241

BALD HILL

From south of Renison Bell north-west to the headwaters of the Whyte River are scattered areas of hilly country formed on Cambrian basic igneous rocks. The hills have typically broad rounded crests but steep sideslopes. The northernmost occurrence is the largest, covering an area 9 x 7 km, and is crossed by the road between Luina and the Savage River settlement. The other main body stretches 20 km north-west from near Rosebery, but is only 2 km wide

The grey soils found on the crests are shallow, with scattered outcrops of bedrock. Soils are grey on the sideslopes as well, but are much deeper and are stony. Stoniness is also a feature on the footslopes and timbered midslopes, where

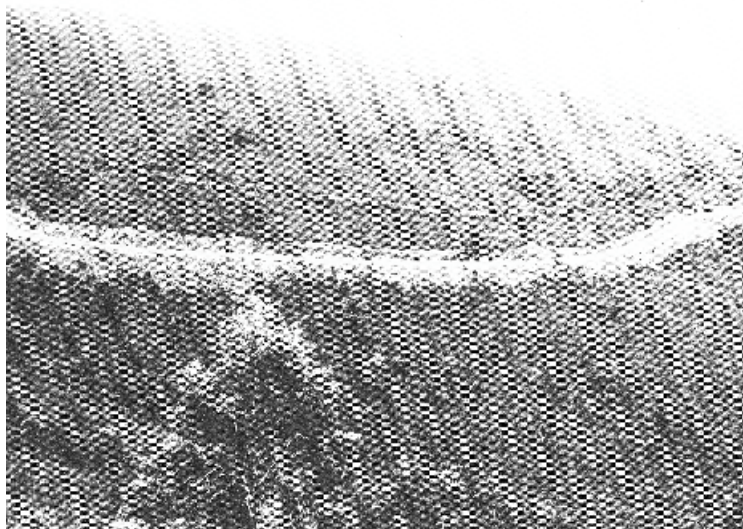
yellowish brown to brownish yellow and sometimes olive soils have formed on the coarse-grained parent material.

Covering the crests is a low heath and sedgeland, which changes to a closed heath and scrub on the sideslopes. The same group of plants were found in all these situations, and included *Melaleuca squarrosa*, honeysuckle, *Casuarina monilifera* and button grass. The areas of woodland growing on the brownish yellow soils are dominated by Smithton peppermint with manuka, cutting grass and guitar plant of secondary importance.

Bald Hill land system mainly serves as zones of nature conservation.

The greatest hazard exists on the steep midslopes and serious slumping of roadside batters was observed in this situation.

188



Bald Hill land system

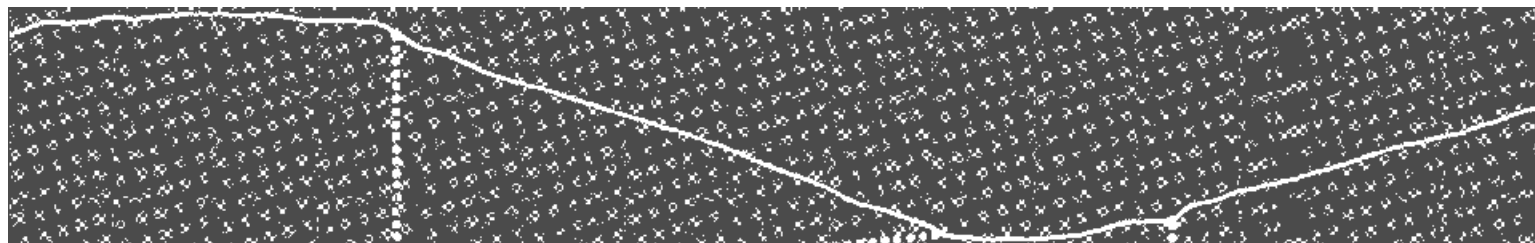
The roadside cutting exhibits the typical profiles observed in midslope situations



LAND SYSTEM

822241

Bald Hill



COMPONENT	1	2	3	4
PROPORTION %	25	35	15	25
CLIMATE	Average Annual Rainfall 2 000-2 500 mm			
GEOLOGY	Cambrian serpentinite, peridotite		Coarser grained basic igneous rocks	
TOPOGRAPHY	Hills			
Land form	Hills			
Position	Broad crests, upper slopes	Midslopes	Gentle footslopes	Timbered midslopes
Average Sideslope °	3	15	7	12
NATIVE VEGETATION				
Structure	Open heath and sedgeland	Closed heath and scrub		Woodland
Association	<i>Melaleuca squarrosa</i> , honeysuckle <i>Casuarina monilifera</i> , <i>Hakea</i> sp , <i>Bauera rubioides</i> , <i>Leptospermum nitidum</i> , button grass, <i>Leptocarpus tenax</i> , Smith ton peppermint			Smithton peppermint, manuka, cutting grass, guitar plant
SOIL	Dark grey (10 YR 4/1) fine sandy light clay soil, uniform texture, rock outcrop scattered	Stony grey (10 YR 6/1) gradational soil	Stony yellowish brown (10 YR 5/6) gradational soil	Stony brownish yellow (10 YR 6/6) gradational soil
Surface Texture	Clay loam			
Permeability	High	Moderate		
Average Depth m	0.2	1.0	1.1	1.2
PRESENT LAND USE	Nature conservation			
HAZARDS	Moderate sheet erosion	High gully erosion and slumping	Moderate sheet and rill erosion	